

Gila County  
Public Health & Community Services  
Prevent. Promote. Protect.

# Gila County SS4A Transportation Safety Action Plan

Central Arizona Governments  
Regional Council Meeting

April 1, 2026



# Gila County SS4A Project Team



**Mark Martz, PhD, MPA**  
**Policy Analyst**



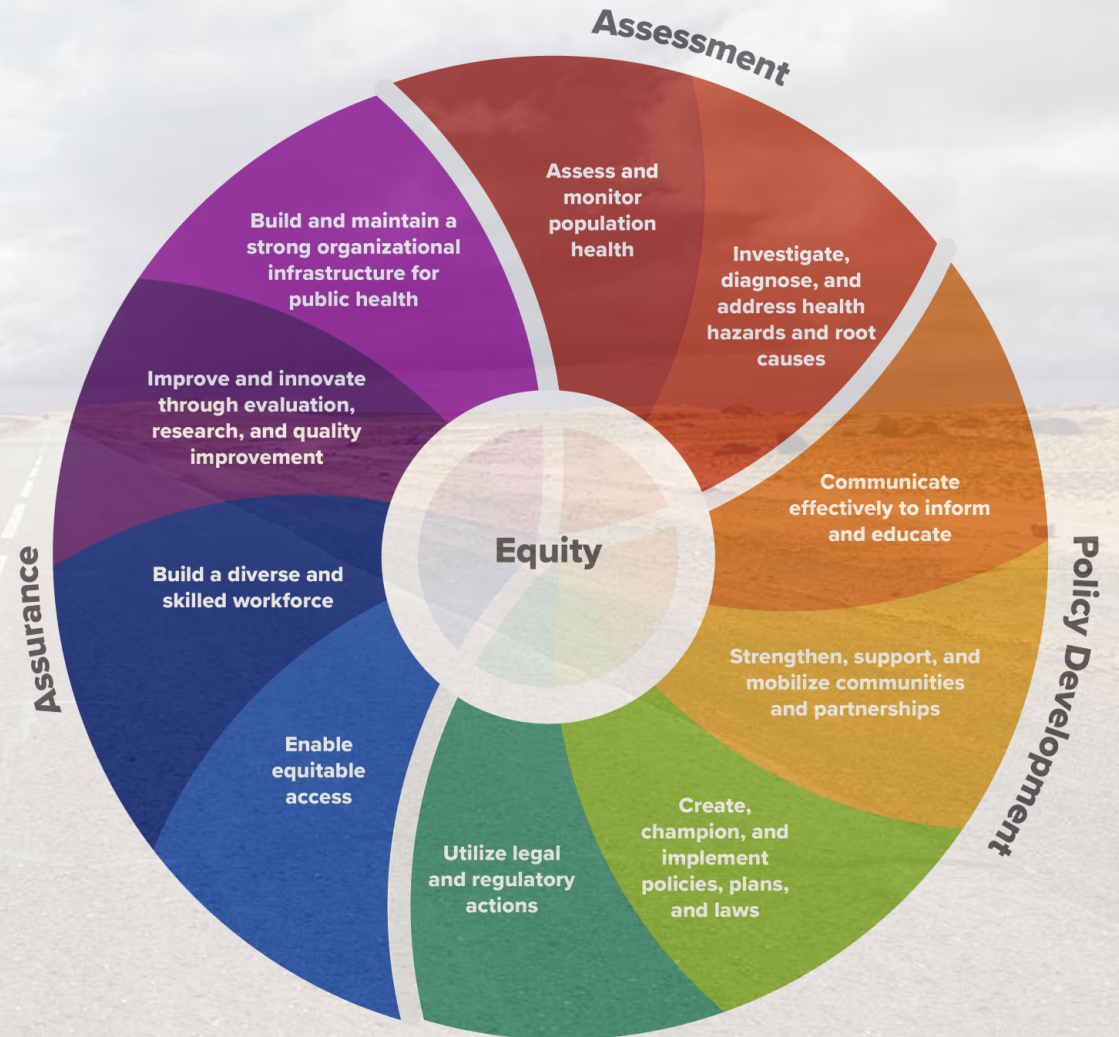
**Kayle Lathrop, MPH**  
**Public Health Grants & Projects Manager**

# Gila County SS4A Grant



- Gila County was awarded a U.S. Department of Transportation FHWA grant to develop a transportation safety action plan.
- The primary goal of the safety action plan is to identify areas within Gila County that can benefit from roadway safety countermeasures aligned with the Safe System Approach.
- Gila County is utilizing components from the 10 Essential Public Health Services framework to inform the plan.

# Gila County SS4A Framework



# Gila County SS4A Data



- 14% of Arizona crashes are rural, yet account for 33% of deaths.
- Gila County has one of the highest crash fatality rates in the nation- 40.55 per 100,000 population, ranking in the top eight most dangerous counties nationally.
- Accidents and fatalities are concentrated in more populous areas, however, there are 'hot spots' in less populous areas.
- Key Factors: excessive speeding, weather, and impaired driving.



# Gila County SS4A Process

- Phase 1 - Primary and Secondary Data Collection & Analysis
- Phase 2 - Identify and Prioritize Intervention Areas
- Phase 3 - Develop Transportation Safety Action Plan
- Phase 4 - Submit Safety Action Plan to FHWA, leveraging the Action Plan to seek federal and state implementation funding, e.g., FHWA, HSIP, others.

# Gila County SS4A and CAG



- Review and compare primary and secondary data results with CAG Transportation Improvement Program (TIP) Projects.
- Align Gila County's Transportation Safety Action Plan project recommendations with CAG TIP and ADOT projects.
- Goal: Leverage all available dollars to enhance and strengthen currently identified projects while providing funding to meet the unique needs of Gila County.

# Gila County SS4A - Next Steps



- Complete data collection and analysis.
- Meet with stakeholders and County engineers to identify and prioritize transportation safety project recommendations.
- Submit Plan to FHWA.
- Apply for implementation funding.

# Gila County SS4A - Survey



<https://www.surveymonkey.com/r/SS4A-Gila26>

[mmartz@gilacountyaz.gov](mailto:mmartz@gilacountyaz.gov)

[klathrop@gilacountyaz.gov](mailto:klathrop@gilacountyaz.gov)





Thank You